

As-Built Solutions



KloudGin's Construction As-Built and Material Reconciliation functionality helps transform your operations by allowing your crews to document as-built information on a single, easy-to-use digital platform.

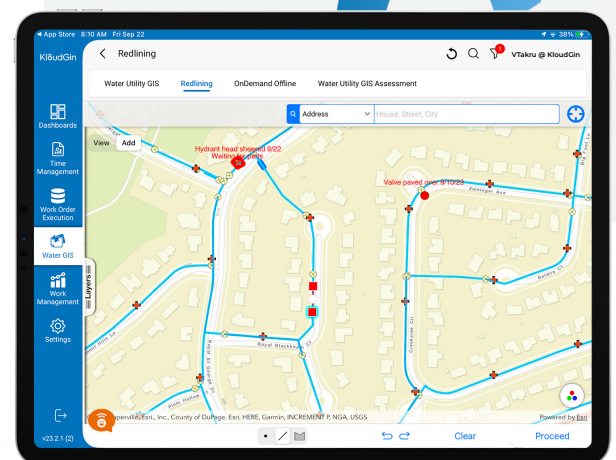
Using traditional maps or crude GIS redline map editing capabilities can be time-consuming for GIS map administrators looking to record field activities. Map editing tasks are delayed further by multiple printed job packets that make tracking down the final as-built paperwork more challenging.

Similarly, work order costing and fixed asset reconciliation can be impacted by a lack of checks and balances to ensure that materials are issued to the right work order.

KloudGin's tightly integrated As-Built solution eliminates all of these issues by forcing quality control checks upfront. Our embedded technology and workflows eliminate data delays and errors resulting from manual construction as-built processes. Using KloudGin's digital data capture capabilities, our As-Built solution helps accelerate work order closures and final map edits from months to a few weeks.

Key Benefits

- 
Seamless Authentication
 Access as-built files using ArcGIS credentials easily with the embedded ArcGIS Map service extension URL. Enable AWS S3 authentication with a single file path.
- 
Platform Integration
 Obtain a single, unified view of your assets and workforce, and power multilevel decisions with better insights with the KloudGin Platform.



Directly mark the GIS Map to record as-built drawings.

Key Values & Features

Advanced Redlining Capabilities

Reduce backlogs and improve operational efficiency by editing and updating maps quickly and comprehensively in the field. Our redlining capabilities allow contractors and field workers to make color-coded map redline edits, change the color and thickness of the lines, drop symbols and use a scribble pen to document detailed information. Users can even leverage the [GIS maps](#) measurement tool to quickly capture items like offset information. Each redline feature can include detailed notes and photos and can be linked through the map label to a specific construction location within their work order. This offers exceptional clarity to GIS Administrators, who can leverage this information to quickly implement changes on the core map and republish new map versions based on as-built drawings.

Comprehensive Material Tracking & Reconciliation

KloudGin's Asset Management Suite provides a simplified way to capture all materials installed in a construction location. Users can quickly reconcile planned, issued, and installed materials by electronically linking issued materials to each construction location. Issued parts which were not used and can't be returned to stores can be scrapped during the material reconciliation process and non-issued parts can be easily identified and rectified to ensure proper asset costing. Gain complete visibility into materials and assets at any given location, anytime. KloudGin's seamless [As-Built](#) process eliminates administrative overhead and ensures precise information for maintenance, recall, and regulatory purposes.

Asset Management Maturity Model

Low	Medium	High
		
High Operations Overhead with No Software	High ROI with Optimized Costs for Operations	Significant Investment for End-to-End Technology & Process Transformation
<ul style="list-style-type: none">• Requires physical storage• Easy to lose• Readability issues• Long construction WO closeout process• Large map editing backlog	<ul style="list-style-type: none">• Easier for GIS administrators to review• Reduces map editing backlogs using redline drawings• Validates material issued to the WO during As-Built material reconciliation• Eliminates data errors• Shortens the WO closeout process from months to weeks	<ul style="list-style-type: none">• ROI heavily dependent on reaching highest maturity• Very few companies can move successfully from paper to full-blown field map editing• Fully digitized processes. Fastest map publishing option

Key Values & Features



Lifetime Access to the Asset As-Built Information

Through the life of the constructed asset, users can quickly access As-Built information related to an asset location. During the construction process, a link through the GIS integration between the construction location and the final asset location allows users to access the original redline map, photos, notes, and installed materials.

Save Time and Enhance Efficiency

Faster project completion and reduced map publication timelines boost overall operational efficiency. Gain a competitive edge by eliminating error-prone manual data entries and speeding up construction information transfer.

Integrate Third-Party Generated As-Built Drawings

To manage legacy data or redline drawings not created directly within KloudGin, we support GIS-linked As-Built drawings coming from [third-party systems](#). Kloudgin's Asset Management Suite also provides as-built integration that enables complete, real-time access to as-built files on GIS maps. With seamless retrieval of as-built files from local stores and unsecured public URLs directly from the GIS map, KloudGin empowers field workers with better visibility and efficient, user-friendly tools.

MICHAEL SALAS

FORMER SVP, CHIEF INFORMATION
& DIGITAL OFFICER,
VEOLIA NORTH AMERICA

“KloudGin was able to deliver the integration and functionality to solve the challenge. In my 30 years' experience with utilities, I've been looking for a single solution that combines asset management and worker and customer service management – and found it with KloudGin.”

About KloudGin

KloudGin is the only cloud provider to combine Enterprise Asset & Field Service Management and AI-powered algorithms into a single solution which connects the back office, customers, mobile employees, and assets. Built for the workers who use it most, KloudGin eliminates traditional information and process silos to enable clients to unify systems, resources, and processes in real time so they can transform the customer experience and improve worker productivity.

Contact a KloudGin industry specialist to learn more.

1-877-256-8303 | [KloudGin.com](https://www.kloudgin.com)

KloudGin
Single Face of Work®